

# CERTIFICATE OF LOCATION OF GOVERNMENT CORNER

NORTH QUARTER Corner of Section 8, Township 105, Range 42, 5TH P.M.

STATE OF MINNESOTA, County of MURRAY

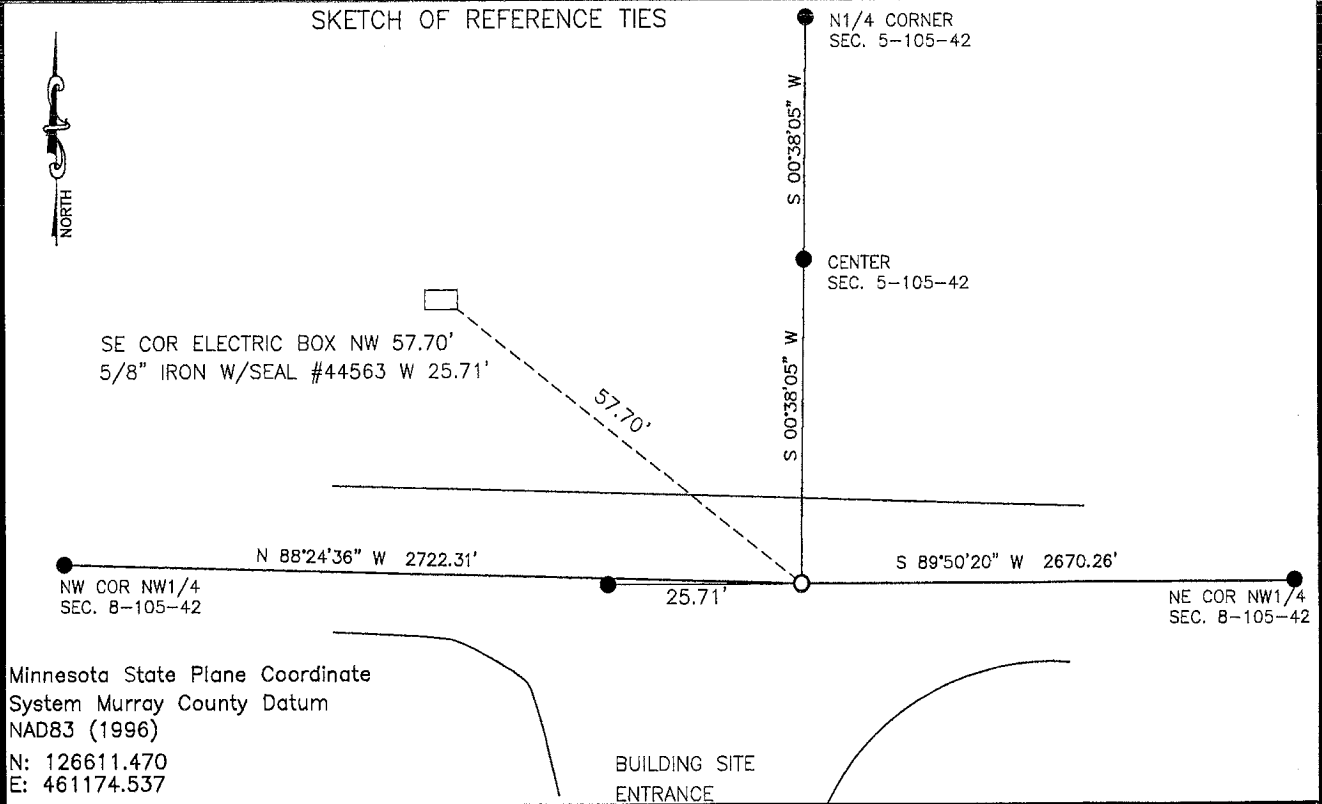
At the corner location shown on the sketch:

On 9/20/13 found a SEE BACK  
DATE

left monument as found,  lowered monument,  removed monument (explain)

On 9/25/13 placed a 5/8" IRON W/SEAL #43844  
DATE

### SKETCH OF REFERENCE TIES



Statement of evidence relative to this corner location is on back of page.

I hereby certify that this document and the data contained herein was prepared by me or under my direct supervision.

*James V. Johnson* 9/30/13  
SIGNATURE DATE

Registration No. 43844

Land Surveyor,  Professional Engineer  
 County Surveyor,  County Engineer

OFFICE OF THE COUNTY RECORDER

County of \_\_\_\_\_

I hereby certify that this document was filed in the Co. Recorders office at \_\_\_\_\_ M on the \_\_\_\_\_ day of FEB 5 2014 A.D. 20\_\_\_\_

County Recorder *James V. Johnson*  
 By \_\_\_\_\_, Deputy

DOCUMENT NO. \_\_\_\_\_

## Statement of Evidence

1861, D.W. Wellman & S.S. Smoot, US. Deputy Surveyors, monumented corner, as per instructions.

April 11, 2006, Ulteig Engineers, Inc., Survey Crew, Brian Payne Party Chief, found nothing. Set a  $\frac{5}{8}$ " rebar with cap: RLS 44563.

On September 25, 2013, Bueltel-Moseng Land Surveying dug with a backhoe in the center line of road and on line with the southerly extension of the line between the found monuments at the North Quarter corner and the center of section. This position is 25.71 feet east of a found  $\frac{5}{8}$ " iron with seal no. 44563. Hole was 12 feet (E-W) by 5 feet (N-S). found nothing. The found iron is set approximately midway between section corners. After reviewing an old aerial photo dated in 1938, there was a fence line running north through Section 5 and also south through Section 8. One of the land owners said the fence line in Section 8 was there up until a few years ago. When projecting line south through the North Quarter corner and the center of section 5, this line is within  $2-3\pm$  the old fence line running through a portion of Section 5. I established corner by projecting line from the North Quarter corner and center of section 5 and also in the center of the road.